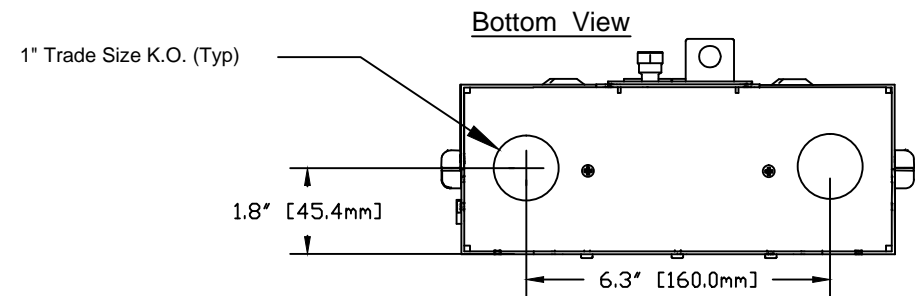


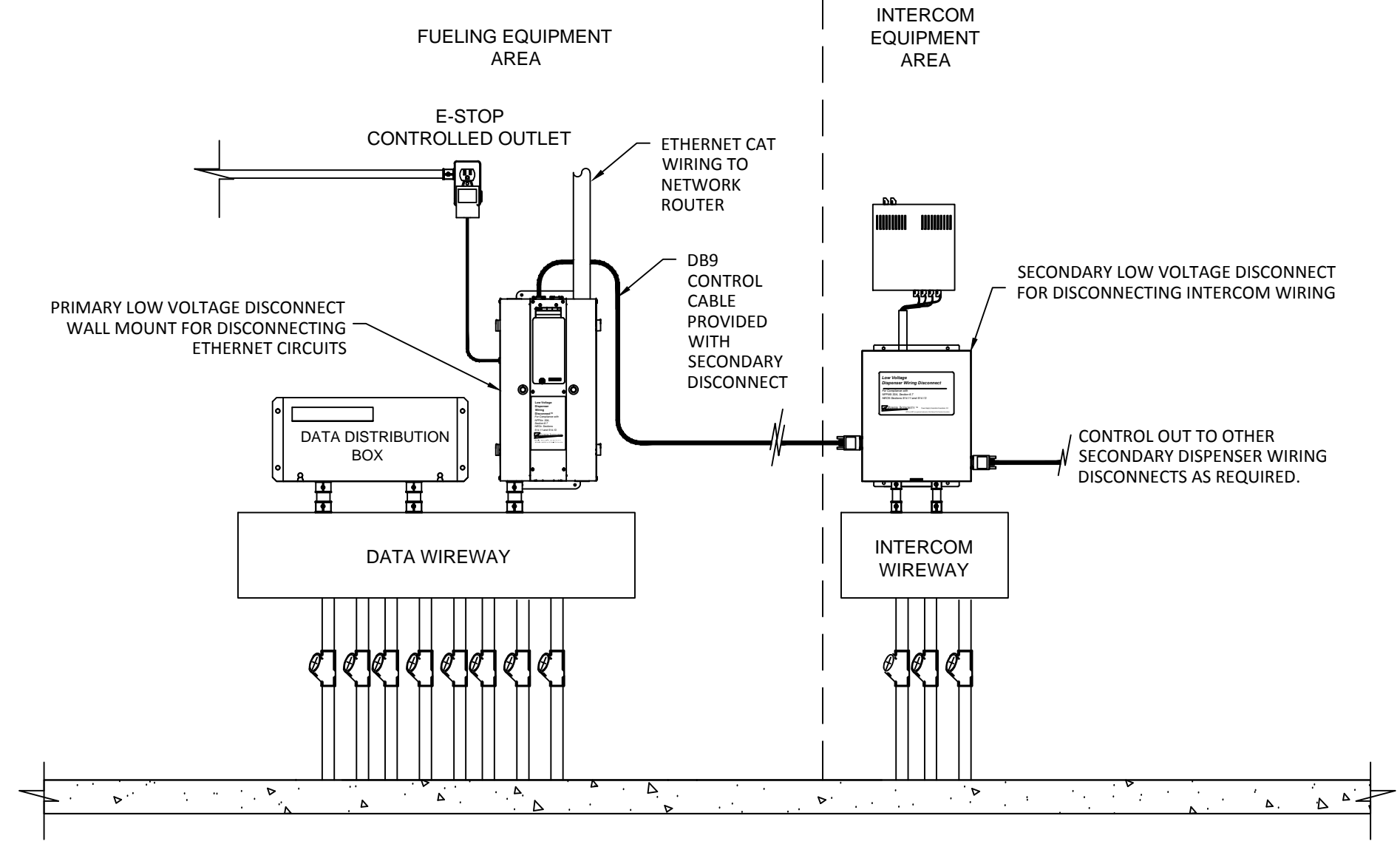
1 System Dimensions
SCALE: N.T.S.



Model	Description
DDS-EXP8D	Primary Low Voltage Dispenser Wiring Disconnect™, Secured Wall Mount, For Up to 8 Dispensers 1 Ethernet Circuit per Dispenser
DDS-EXP88D	Primary Low Voltage Dispenser Wiring Disconnect™, Secured Wall Mount, For Up to 8 Dispensers 2 Ethernet Circuits per Dispenser
DDS-EXP16D	Primary Low Voltage Dispenser Wiring Disconnect™, Secured Wall Mount, For Up to 16 Dispensers 1 Ethernet Circuit per Dispenser

2 Model Numbers
SCALE: N.T.S.

REV	BY	DESCRIPTION	DATE	THIS DRAWING AND THE INFORMATION THEREIN IS CONFIDENTIAL AND THE PROPERTY OF POWER INTEGRITY CORP. THIS CONFIDENTIAL INFORMATION IS DISCLOSED TO YOU ON THE CONDITION THAT IT NOT BE DISCLOSED TO ANYONE OTHER THAN A POWER INTEGRITY EMPLOYEE AND NOT BE REPRODUCED IN WHOLE OR IN PART WITHOUT THE WRITTEN AUTHORIZATION OF POWER INTEGRITY CORPORATION.	TOLERANCES UNLESS OTHERWISE SPECIFIED .XXX=±.005 .XX=±.015 .X=±.03 FRACTIONS=±1/64 DEGREES=±2° DIMENSIONS IN INCHES	POWER INTEGRITY Corporation 1834 PEMBROKE ROAD GREENSBORO, N.C. 27408 PH: 336-379-9773 FAX: 336-379-1301 www.powerintegritycorp.com	DESCRIPTION: Dispenser Wiring Disconnect™ Solution EXTENDED DESC.: Application Drawing for Primary Disconnect for Ethernet to Dispensers (Wall Mount)
O	JA	New Release	1/20/2014				
SCALE: N.T.S.		DATE: 1/20/2014		SHEET: 1 of 3		P/N: DDS-EXPxxD REV. O	



1 Typical Elevation
SCALE NTS

REV	BY	DESCRIPTION	DATE	<p>THIS DRAWING AND THE INFORMATION THEREIN IS CONFIDENTIAL AND THE PROPERTY OF POWER INTEGRITY CORP. THIS CONFIDENTIAL INFORMATION IS DISCLOSED TO YOU ON THE CONDITION THAT IT NOT BE DISCLOSED TO ANYONE OTHER THAN A POWER INTEGRITY EMPLOYEE AND NOT BE REPRODUCED IN WHOLE OR IN PART WITHOUT THE WRITTEN AUTHORIZATION OF POWER INTEGRITY CORPORATION.</p>	<p>TOLERANCES UNLESS OTHERWISE SPECIFIED .XXX=±.005 .XX=±.015 .X=±.03 FRACTIONS=±1/64 DEGREES=±2° DIMENSIONS IN INCHES</p>	<p>POWER INTEGRITY Corporation 1834 PEMBROKE ROAD GREENSBORO, N.C. 27408 PH: 336-379-9773 FAX: 336-379-1301 www.powerintegritycorp.com</p>	DESCRIPTION: Dispenser Wiring Disconnect™ Solution				
O	JA	New Release	1/20/2014				EXTENDED DESC.: Application Drawing for Primary Disconnect for Ethernet to Dispensers (Wall Mount)				
.	.	.	.				SCALE: N.T.S			DATE: 1/20/2014	SHEET: 2 of 3
.	.	.	.				P/N: DDS-EXPxxD			REV. O	
.	.	.	.								
.	.	.	.								

PRIMARY
LOW VOLTAGE DISPENSER WIRING
DISCONNECT™ Solution
For Dispensers 1-8 CAT5e
Power Integrity Model: DDS-EXP8D
Shown

Primary Low Voltage Disconnect - CAT5e Model: (DDS-EXP8D) Example Only.

Install Equipment:

- Securely attach to the wall using appropriate fasteners.

Make Connections:

- Identify the wires connected to each dispenser or fueling position.
- There is 1 Ethernet cable per dispenser. Some dispensers may have a second Ethernet Cable.

Step - 1: Connect the wiring from the dispenser to the DDS.

- Connect the Ethernet cable from the Input Dispenser #1 to the #1 position jack on the left side of the Primary Disconnect.

Step - 2: Connect the wiring from the DDS to the Network Router

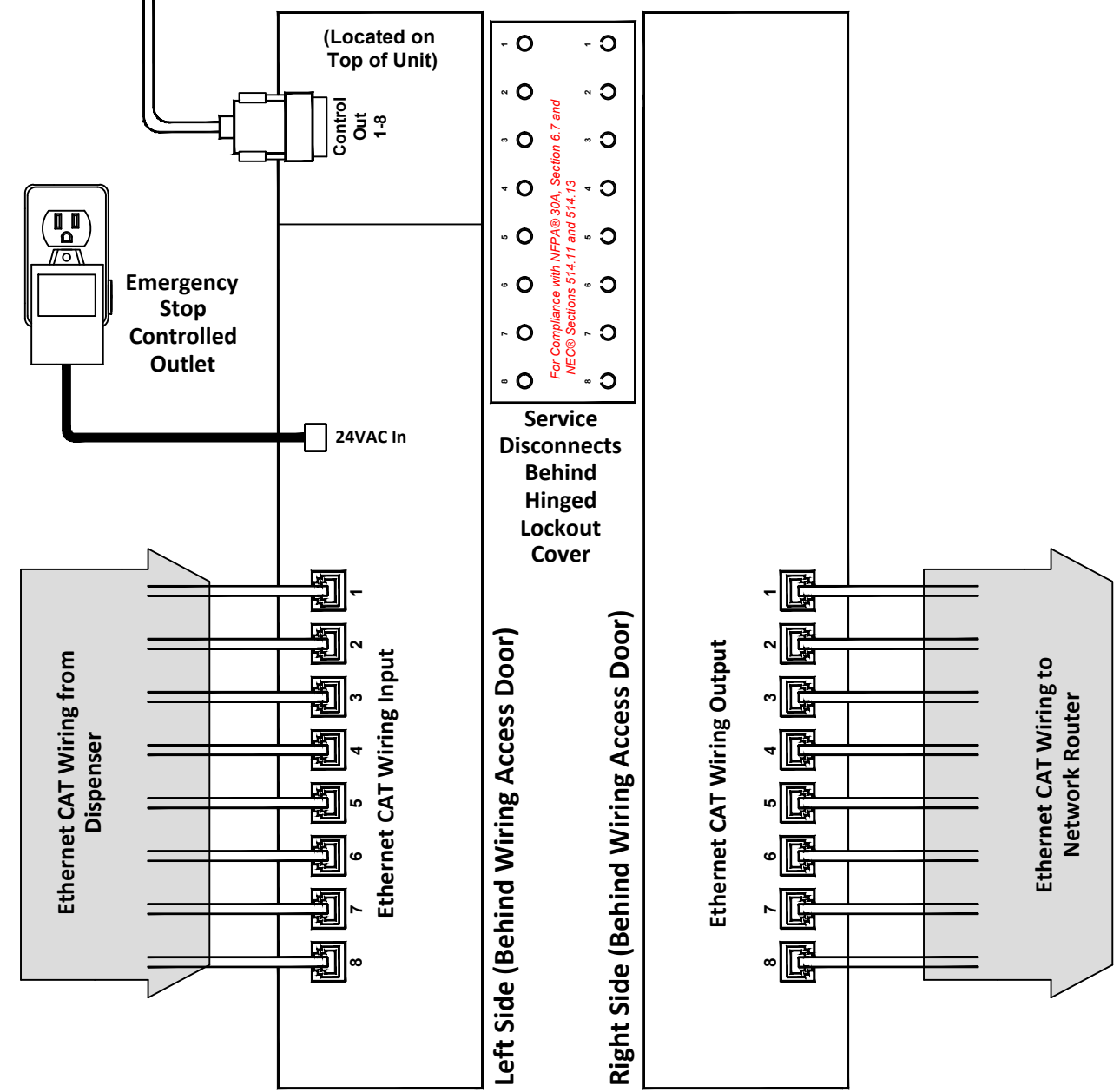
- Connect an Ethernet patch cable from the Output #1 Position Jack on the right side of the Primary Disconnect to the network router.
- Repeat steps 1 and 2 listed above to connect the remaining fuel dispensers.

Connect DB9 Control Cable (As Required)

- Secondary Disconnects are used to allow the Primary Disconnect to disconnect additional circuits such as Intercoms.
- Secondary Disconnects are powered and controlled by the Primary Disconnect by using a DB9 control cable.
- Connect the DB9 cable provided with the Secondary Disconnect to the Control Out connector of the Primary Disconnect or a previous Secondary Disconnect and the Control In connector of the Secondary Disconnect.

1 Typical Wiring Connections
SCALE: N.T.S.

DISPENSERS 1-8
Control Out to
Secondary Disconnects



Left Side (Behind Wiring Access Door)

Right Side (Behind Wiring Access Door)

For Compliance with NFPA® 30A, Section 6.7 and
NEC® Sections 514.11 and 514.13

REV	BY	DESCRIPTION	DATE	THIS DRAWING AND THE INFORMATION THEREIN IS CONFIDENTIAL AND THE PROPERTY OF POWER INTEGRITY CORP. THIS CONFIDENTIAL INFORMATION IS DISCLOSED TO YOU ON THE CONDITION THAT IT NOT BE DISCLOSED TO ANYONE OTHER THAN A POWER INTEGRITY EMPLOYEE AND NOT BE REPRODUCED IN WHOLE OR IN PART WITHOUT THE WRITTEN AUTHORIZATION OF POWER INTEGRITY CORPORATION.		TOLERANCES UNLESS OTHERWISE SPECIFIED .XXX=±.005 .XX=±.015 .X=±.03 FRACTIONS=±1/64 DEGREES=±2° DIMENSIONS IN INCHES	POWER INTEGRITY Corporation 1834 PEMBROKE ROAD GREENSBORO, N.C. 27408 PH: 336-379-9773 FAX: 336-379-1301 www.powerintegritycorp.com	DESCRIPTION: Dispenser Wiring Disconnect™ Solution EXTENDED DESC.: Application Drawing for Primary Disconnect for Ethernet to Dispensers (Wall Mount)
O	JA	New Release	1/20/2014					
.	.	.	.					
.	.	.	.					
.	.	.	.					
.	.	.	.					
.	.	.	.					
SCALE: N.T.S			DATE: 1/20/2014	SHEET: 3 of 3		P/N: DDS-EXPxxD REV. O		