

---

# Custom Panel Solutions

**BIG** deals come in small packages



***Simplify the Power Distribution & Controls Required  
for YOUR Code Compliant Retail Fueling Operation***



**Power • Control • Protect**



**Power Integrity Corporation**  
1834 Pembroke Road  
Greensboro, NC 27408  
336.379.9773  
[www.powerintegritycorp.com](http://www.powerintegritycorp.com)

Power Integrity's Custom Panel Solution (CPS) is engineered to simplify the power distribution and controls required for a compliant retail fueling system.

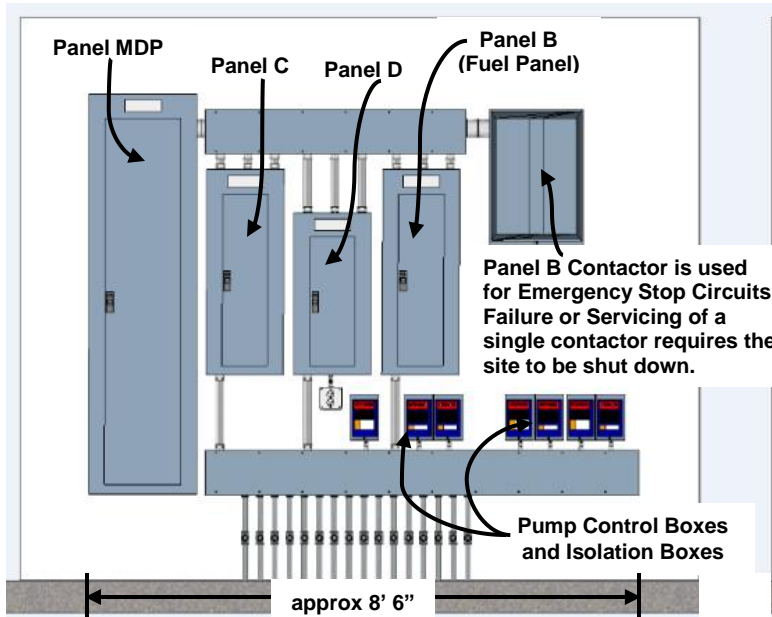
Power Integrity will engineer a solution that is designed for your specific site requirements, and support you with:

- Detailed layout drawings and wiring diagrams during the design phase
- Technical assistance during construction to ensure a quick and easy installation
- Customer service after opening when needed for your site's renovations and upgrades

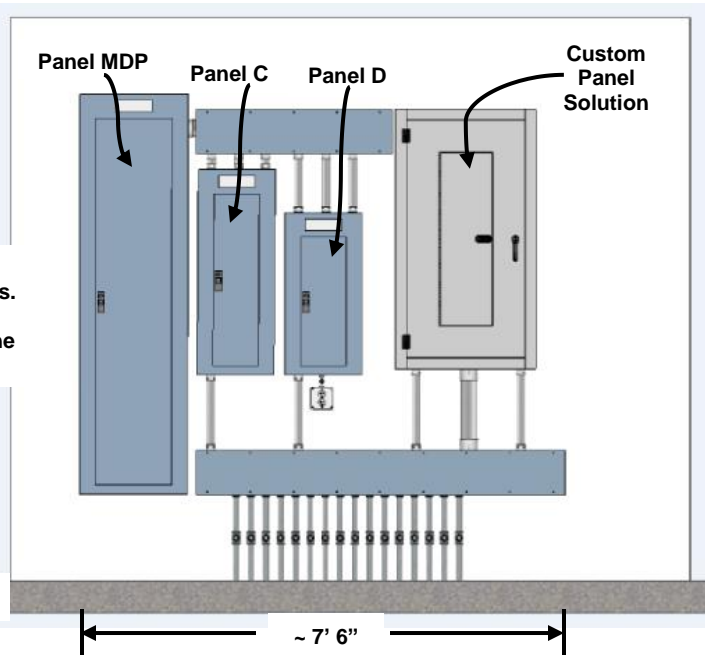
Installing Power Integrity's CPS saves space and money, while reducing installation time and jobsite errors, making it easier for your store to open on time.

- **Site Specific:** designed to meet your store's requirements, including electrical distribution and fueling controls with options for lighting controls, surge protection and low voltage disconnects
- **Safe:** cULus listed, complies with NEC and NFPA requirements
- **Space Saving:** Single section integrated solution that typically saves 50% or more wall space
- **Installation Labor Saving:** Factory assembled and wired means significantly less on-site installation time
- **Reliable:** Factory tested and inspected so you know it works like it's supposed to work when it gets to the jobsite
- **Consistency:** Standardized layouts make installations across multiple locations easier and quicker

#### Loose Component Installation



#### CPS Installation

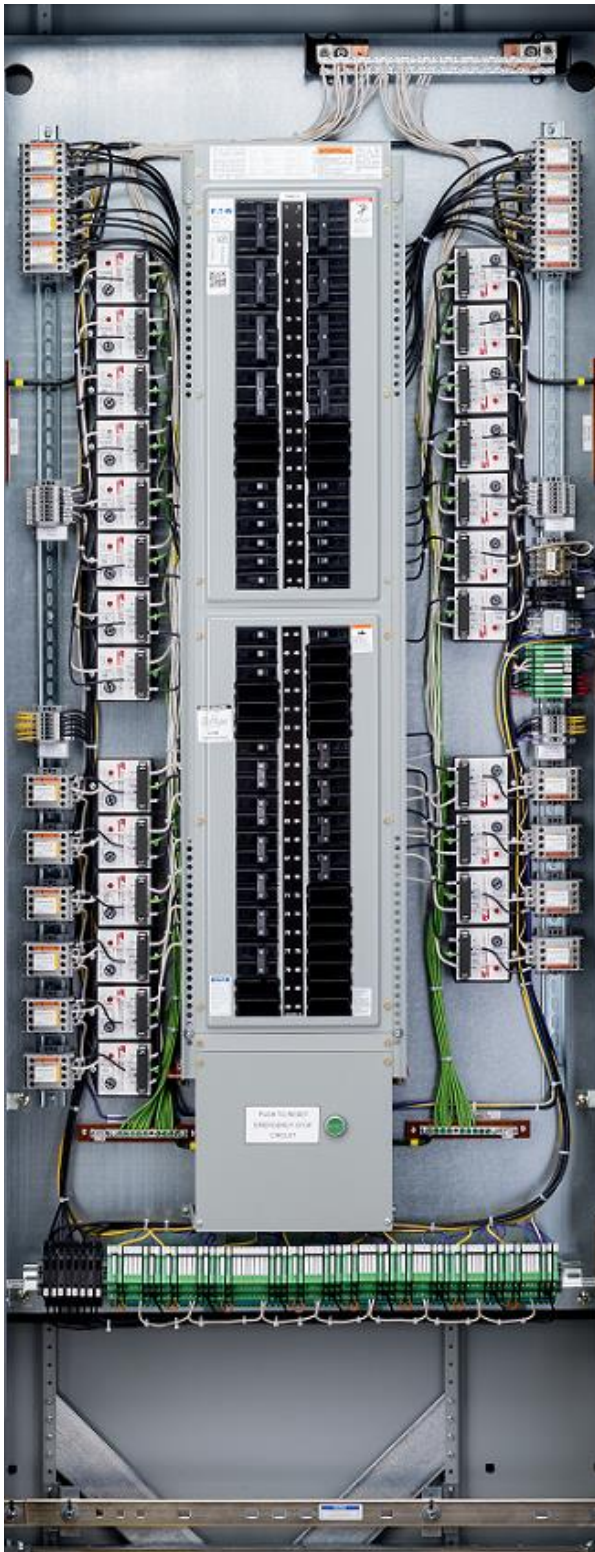


CPS eliminates the need for

- the electrical distribution Fuel Panel
- the main contactor used for emergency stop system feeding the electrical distribution Fuel Panel
- isolation boxes – 1 per pump, 8 dispensers max per isolation box
- standard pump control boxes\* – 1 per pump

\* If "smart control" boxes or VFC's are used for pump controls, those are still required. CPS works with "smart control" boxes and VFC's.

[www.powerintegritycorp.com](http://www.powerintegritycorp.com)



## CPS Key Features

- electrical distribution Fuel Panel
- emergency stop controls
- pump handle isolation using solid state technology with error detection
- 4-wire isolated interface for tank monitors including PLLD
- individual pump and dispenser contactors, allowing connection of remote control or monitoring system
- lock-offs on dispenser, pump, and card reader circuits to properly and safely isolate a single device for servicing
- optional series connected surge suppression for protection of sensitive electronic circuits
- optional lighting circuits and lighting controls
- optional dispenser low voltage disconnect
  - dispenser data, card reader, intercom, video
- isolated ground terminations for proper network communications
- marked terminals for easy connection of dispensers, pumps, card readers, fuel management systems and tank monitors
- door-in-door enclosure to help protect against arc flash
- indoor NEMA 1 enclosure; outdoor NEMA 3R available
- factory assembled and pre-wired solution, eliminating mounting and wiring of separate components in the field

***Contact Power Integrity for Selection & Pricing***

**Power • Control • Protect**

## Emergency Stop Operators



Emergency Stop Buttons with protective covers



IA-ESOCA e-stop button with alarm plus ESPLATE mounting plate



IA-ESORS cashier control with protective shroud

Emergency Stop Controls are required by the National Electrical Code at ALL fueling facilities. Power Integrity offers a full line of emergency stop operators to meet your site requirements. All outdoor e-stop operators have a protective cover to prevent accidental or nuisance pressing. Cashier Control Stations installed at the counter allow employees to activate the emergency stop system without leaving the cashier area.

- Available in momentary, twist-to-reset, key-to-reset, and break glass configurations
- Up to 3 sets of contacts, either NO or NC
- Cashier Control Stations include both emergency stop and reset buttons
- Custom Cashier Control Station configurations available including product status lights, timed lighting overrides, and individual dispenser shut-down

Emergency Stop Operators - Outdoor Rated	
IA-E SOC	Emergency stop operator with lift-up clear cover
IA-E SOCA	Emergency stop operator with lift-up clear cover and alarm
IA-E SOC/T	Emergency stop operator, twist to release with lift-up clear cover
IA-E SOCA/T	Emergency stop operator, twist to release with lift-up clear cover and alarm
IA-E SOCK	Emergency stop operator, keyed reset with lift-up clear cover
IA-E SOG	Emergency stop operator with "Break Glass", hammer, and (5) replacement discs
Emergency Stop Operator Accessories	
IA-E SPLATE	Emergency stop operator mounting plate with "emergency fuel shutoff" nameplate
IA-BREAKTAB	Locking mechanism block with (5) one-time use breakaway seals
Cashier Control Stations - Indoor Rated	
IA-E SORS	Cashier control with emergency stop button with shroud to prevent accidental pressing, and reset button
IA-E SORLS	Cashier control with emergency stop button with shroud to prevent accidental pressing, reset button, and light control bypass switch
Emergency Stop Operator Lift-Up Covers	
IA-PBCOVSA	Small lift-up clear cover with alarm for e-stop operators, 5.5"W x 7.0"H (Yellow)
IA-PBCOVS	Small lift-up clear cover for e-stop operators, 5.5"W x 7.0"H (Yellow)
IA-PBCOVLAR	Large lift-up clear cover with alarm for e-stop operators 7.0"W x 9.0"H (Red)

[www.powerintegritycorp.com](http://www.powerintegritycorp.com)